



กรมราชทัณฑ์
เลขที่รับ 87626
วันที่ 16 พ.ย. 2566
เวลา

ที่ ยธ ๐๒๐๐๔/๑๑๙๙๔

ถึง ส่วนราชการในสังกัดกระทรวงยุติธรรม

ด้วยกรมความร่วมมือระหว่างประเทศ กระทรวงการต่างประเทศ ได้มีหนังสือแจ้งว่า Lee Kuan Yew School of Public Policy (LKYSPP) ภายใต้ National University of Singapore มีความประสงค์จะมอบทุนศึกษาในระดับปริญญาโทแก่บุคลากรในหน่วยงานภาครัฐของประเทศไทย จำนวน ๓ หลักสูตร ได้แก่

๑. หลักสูตร Master in Public Administration (MPA) ระยะเวลา ๑ ปี โดยผู้สมัครควรมีประสบการณ์การทำงานที่เกี่ยวข้อง ๕ ปีขึ้นไป และเป็นระดับหัวหน้างานที่จะก้าวขึ้นสู่ตำแหน่งที่สูงขึ้น กำหนดปิดรับสมัครภายในวันที่ ๓๑ ธันวาคม ๒๕๖๖

๒. หลักสูตร Master in Public Policy (MPP) ระยะเวลา ๒ ปี โดยผู้สมัครควรมีประสบการณ์การทำงานที่เกี่ยวข้อง ๒ ปีขึ้นไป กำหนดปิดรับสมัครภายในวันที่ ๑๕ ธันวาคม ๒๕๖๖

๓. หลักสูตร Master in International Affairs (MIA) ระยะเวลา ๒ ปี โดยผู้สมัครไม่จำเป็นต้องมีประสบการณ์การทำงาน กำหนดปิดรับสมัครภายในวันที่ ๑๕ ธันวาคม ๒๕๖๖ รายละเอียดปรากฏตามเอกสารที่ได้แนบมาพร้อมนี้

โดยผู้ที่มีคุณสมบัติตามที่หลักสูตรกำหนดและประสงค์สมัครรับทุนดังกล่าว สามารถลงทะเบียนสมัครเข้ารับทุนข้างต้นได้โดยตรงที่เว็บไซต์ <https://lkyspp.nus.edu.sg/admissions> ภายในวันและเวลาที่กำหนด ทั้งนี้ หากผู้สมัครได้รับการพิจารณาให้รับทุนศึกษาต่อดังกล่าว ขอให้แจ้งกองการต่างประเทศ สำนักงานปลัดกระทรวงยุติธรรมทราบด้วย โดยได้มอบหมายให้นายศิริพงษ์ สรรเสริญ เจ้าหน้าที่วิเทศสัมพันธ์ โทรศัพท์ ๐ ๒๑๔๑ ๕๒๔๔ เป็นผู้ประสานงาน

| | |
|---|--|
| กองบริหารทรัพยากรบุคคล กรมราชทัณฑ์ | |
| เลขรับ | 16319 |
| เวลา | 13.02 น. |
| <input type="checkbox"/> ฝ่ายบริหาร | <input type="checkbox"/> กลุ่มงานเงินเดือนฯ |
| <input type="checkbox"/> กลุ่มงานบรรจุฯ | <input type="checkbox"/> กลุ่มงานสรรหาฯ |
| <input type="checkbox"/> กลุ่มงานสวัสดิการฯ | <input checked="" type="checkbox"/> ศูนย์ข้อมูลฯ |
| <input type="checkbox"/> กลุ่มงานอัตราฯ | <input type="checkbox"/> กลุ่มงานวินัยฯ |

๕*

ผอ.บค.

17 พ.ย. 2566

กองการต่างประเทศ

กลุ่มงานทุนและฝึกอบรมต่างประเทศ

โทร. ๐ ๒๑๔๑ ๕๒๔๔

ไปรษณีย์อิเล็กทรอนิกส์ saraban@moj.go.th



| | |
|------------------|----------------|
| ศูนย์ข้อมูลบุคคล | |
| เลขรับ | 3110 |
| วันที่ | 20 / พ.ย. / 66 |
| เวลา | 09.26 |

ส่งคุณ... กมลพ...
ดำเนินการ 20/พ/66



ที่ กต ๑๖๐๒๓/๑-๕๓๕๕

กระทรวงการต่างประเทศ
ศูนย์ราชการเฉลิมพระเกียรติ ๘๐ พรรษา
อาคารรัฐประศาสนภักดี ชั้น ๘ ทิศใต้
ถนนแจ้งวัฒนะ กทม. ๑๐๒๑๐

๑ พฤศจิกายน ๒๕๖๖

เรื่อง: ทูตศึกษาระดับปริญญาโทของ Lee Kuan Yew School of Public Policy (LKYSPP)

เรียน ปลัดกระทรวงยุติธรรม

สิ่งที่ส่งมาด้วย: สำเนาหนังสือ Lee Kuan Yew School of Public Policy ลงวันที่ ๒๑ ตุลาคม ค.ศ. ๒๐๒๓
พร้อมรายละเอียดหลักสูตร

ด้วย Lee Kuan Yew School of Public Policy (LKYSPP) ภายใต้ National University of Singapore ให้ทุนศึกษาระดับปริญญาโทแก่บุคลากรในหน่วยงานภาครัฐของประเทศไทย จำนวน ๓ หลักสูตร ดังนี้

๑. หลักสูตร Master in Public Administration (MPA) ระยะเวลา ๑ ปี ผู้สมัครควรมีประสบการณ์การทำงานที่เกี่ยวข้อง ๕ ปีขึ้นไป เป็นระดับหัวหน้างานที่จะก้าวขึ้นสู่ตำแหน่งที่สูงขึ้น กำหนดปิดรับสมัครภายในวันที่ ๓๑ ธันวาคม ๒๕๖๖

๒. หลักสูตร Master in Public Policy (MPP) ระยะเวลา ๒ ปี ผู้สมัครควรมีประสบการณ์การทำงานที่เกี่ยวข้อง ๒ ปีขึ้นไป กำหนดปิดรับสมัครภายในวันที่ ๑๕ ธันวาคม ๒๕๖๖

๓. หลักสูตร Master in International Affairs (MIA) ระยะเวลา ๒ ปี ผู้สมัครไม่จำเป็นต้องมีประสบการณ์ในการทำงาน กำหนดปิดรับสมัครภายในวันที่ ๑๕ ธันวาคม ๒๕๖๖

กระทรวงการต่างประเทศพิจารณาแล้วเห็นว่า หลักสูตรข้างต้นเป็นประโยชน์ต่อการพัฒนาองค์ความรู้และเสริมสร้างทักษะของบุคลากรในหน่วยงานของท่าน ดังนั้น จึงขอความร่วมมือในการเผยแพร่ข้อมูลให้แก่ผู้สนใจทราบ ทั้งนี้ ผู้สนใจสามารถดูข้อมูลเพิ่มเติมได้ที่ <http://www.lkyspp.nus.edu.sg/admissions> และขอให้ส่งใบสมัครโดยตรงไปยัง Lee Kuan Yew School of Public Policy (LKYSPP)

จึงเรียนมาเพื่อโปรดพิจารณา

ขอแสดงความนับถือ

(นางอุรวิรัช เจริญโต)

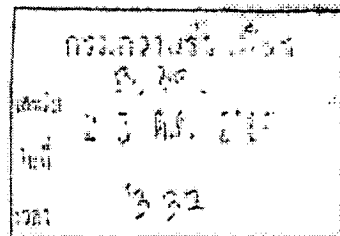
อธิบดีกรมความร่วมมือระหว่างประเทศ
ปฏิบัติราชการแทนปลัดกระทรวงการต่างประเทศ

กรมความร่วมมือระหว่างประเทศ

โทร. ๐ ๒๒๐๓ ๕๐๐๐ ต่อ ๔๓๑๐๗ (สุพิชฌาย์)

โทรสาร ๐ ๒๒๔๓ ๕๓๒๕

ไปรษณีย์อิเล็กทรอนิกส์ saraban1600@mfa.go.th และ supattra.w@mfa.go.th



21 October 2023

Mrs Ureerat Chareontoh

Director General

Thailand and International Cooperation Agency

Ministry of Foreign Affairs

Thailand and International Cooperation Agency, the Government Complex Ratthaprasasanabhakit (B)
Building, South Zone, 8th Floor, 120 Mob 3, Chaengwattana Rd., Thungsonghong, Laksi District Bangkok,
Thailand 10210

Dear Mrs Ureerat Chareontoh,

THE LEE KUAN YEW SCHOOL OF PUBLIC POLICY – CALL FOR NOMINATIONS FOR MASTER DEGREE PROGRAMMES

I am writing to invite your assistance in disseminating information and nominating promising candidates to enrol in any of the three Master's degree programmes offered by the Lee Kuan Yew School of Public Policy (LKY School). We are confident that the education provided by the LKY School will be deeply rewarding for both the candidates and your institution.

The LKY School is also happy to be your strategic partner in talent management and development. We invite you to pre-select candidates for the nomination. You may send a list of nominees to our admissions office, where an officer will be assigned to work with you on the nominations.

The LKY School has a noble mission: to be a leading global public policy school, with its faculty and alumni shaping thought leadership, improving standards of governance, and transforming lives for a more sustainable world. We can also confidently say that the LKY School is one of the most highly-regarded public policy schools in Asia and the world. We stand out for several reasons:

Academic excellence. The LKY School is part of the National University of Singapore, ranked 8th worldwide (QS World University Rankings 2024). In addition, we are widely recognised as one of the world's top public policy institutions. We are a core member of the Global Public Policy Network which includes the London School of Economics and Political Science, the School of Public Affairs at Sciences Po, and the School of International and Public Affairs (SIPA) at Columbia among others.

A robust and diverse faculty grounds LKYSPS curricula and research endeavours. Over 50 permanent and visiting professors bring an international reputation and academic and policy expertise to the classroom.

Global outlook. We are one of the world's most diverse public policy school. Our graduates come from close to 100 economies. Many have gone on to become ministers, permanent secretaries, members of parliament, social impact entrepreneurs, and heads of Non-Governmental Organisations. Our graduates leave the School with an impressive global network. The benefits of public policy education at LKYSPS are life-long.

Helping shape Asia's influence in the World. The transformation of Asia has been phenomenal, and its influence on global affairs will change relationships between regions, countries, and states. The need to understand these new relationships and their implications for the global order is all the more important for the policymakers and leaders of tomorrow. LKYSPS offers a unique opportunity to research and analyse these complex developments in a rich interdisciplinary, multicultural setting.



An innovative Asia-focused curriculum for Asia's policymakers. Our curriculum is an innovative blend of Asia-centric case studies, best practices, and developmental stories. Singapore's unique experience forms a cornerstone both for understanding and challenging prevailing theories. The curriculum draws insights from five decades of Singapore's nation-building efforts against a background of Asia's development. At LKYSPP, students get to rehearse real policy cases in the classroom. In an innovative modern pedagogical environment, our students learn from our distinguished faculty and hear diverse perspectives from world-renowned academics and policy practitioners.

LKYSPP offers the following three master programmes conducted in English.

Master Programmes

- **One-year Master in Public Administration (MPA):** For mid-managerial professionals with at least five years of relevant work experience in a supervisory role, seeking to transition to senior management and leadership functions.
- **Two-year Master in Public Policy (MPP):** For early-career professionals with at least two years of relevant work experience looking to gain a strong foundation in policy analysis, programme evaluation, and public management.
- **Two-year Master in International Affairs (MIA):** For professionals with a keen interest in Asian and global affairs and a strong passion for contributing to positive transformations worldwide.

For further details, including application instructions, please visit our website at <http://www.lkyspp.nus.edu.sg/admissions>. Places in the programmes and scholarships are offered on a competitive basis. Please note that the application deadline is 15 December for MIA and MPP programmes, and 31 December 2023 for the MPA programme.

When you have prepared a list of nominees, please send the list to **Desmond Seow, Assistant Head of Regions**, at Desmond@nus.edu.sg by **15 November 2023**. Please do let us know if you require additional time to gather your nominees.

Thank you in advance for your help and support for this important mission to prepare your talented staff for future leadership positions. We are confident that their time with the Lee Kuan Yew School of Public Policy will make a real positive difference when they resume their careers upon graduation.

With best wishes,

Celeste Ho (Ms)
Deputy Director, Academic Affairs
Lee Kuan Yew School of Public Policy, NUS

Encl: LKY School Programme Brochure

Graduate
Programmes



Lee Kuan Yew
School of Public Policy



TUITION AND FINANCIAL AID

Fees and Costs¹ (For Academic Year 2023/2024)

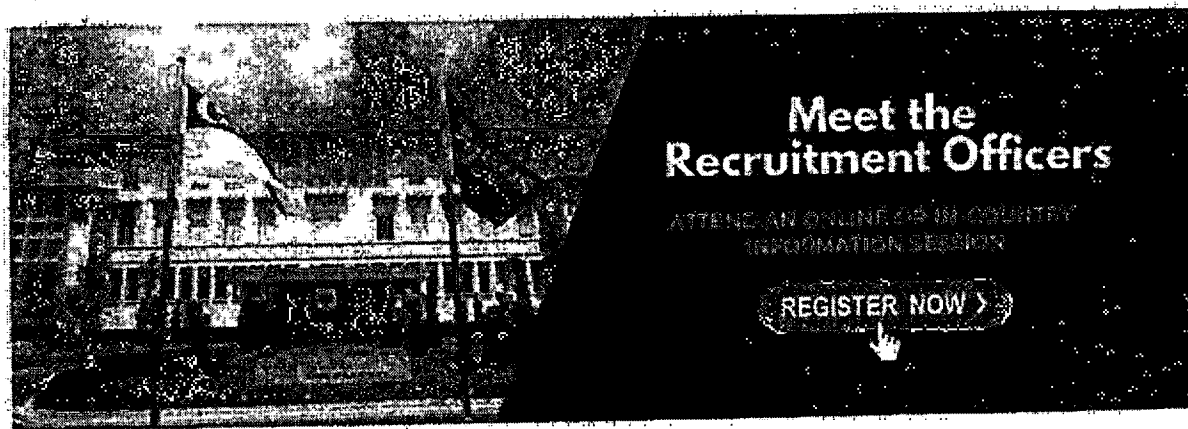
| | Master in Public Policy (MPP) | Master in International Affairs (MIA) | Master in Public Administration (MPA) |
|--|--------------------------------|---------------------------------------|---------------------------------------|
| Tuition fees (Singaporeans) ² | S\$38,900 | S\$95,118 | S\$21,395 |
| Tuition fees (Singapore PRs) ³ | S\$42,000 | | S\$23,100 |
| Tuition fees (International students) ³ | S\$64,041 | | S\$35,142 |
| Tuition fees without subsidy ³ | S\$89,765 | | S\$49,257 |
| Other fees (Estimated) ⁵ | S\$4,000 | S\$4,000 | S\$4,000 |
| Costs at partner university ⁶ | N/A | N/A | N/A |
| Living costs ⁷ | S\$1,920 to S\$2,625 per month | | |
| Student service fee | S\$167.90 per semester | | |
| Health service fee | S\$83.25 per semester | | |

¹The tuition fee schedule for the remaining course duration for Singaporean students admitted in AY2023/2024 intake will be reviewed before the start of AY2024.

- 1. Fees are correct at time of printing and are subject to change.
- 2. Fee amounts quoted here for Singapore Citizens and Permanent Residents are exclusive of prevailing GST. The applicable GST is subsidised by the Ministry of Education, MOE.
- 3. Fee amounts quoted here for International Students are inclusive of prevailing GST. International Students will have to bear the prevailing GST (8% in 2023 and 9% from 2024) levied on the fees payable by them.
- 4. Students who have previously enjoyed government subsidy or sponsorship by a Singapore government agency (such as scholarships offered by the Ministries, Public Service Commission and Statutory Boards) in a graduate programme will not be eligible for Ministry of Education (MOE) subsidy in another graduate programme at the same or lower level. Instead, such students will be liable to pay "Non-Subsidised Fees", inclusive of prevailing GST. For example, students who had previously enjoyed subsidies/scholarship in a Master programme and had attained the Master degree will not be eligible for subsidies in another programme at Master or lower level. For more details, please visit <http://www.nus.edu.sg/registrar/administrative-policies-procedures/graduate/graduate-fees>
- 5. Includes payment for student development programmes, the orientation programme, student pass/visa fees and the programme closure event. These costs vary from year to year.
- 6. Includes accommodation, curriculum materials and activities and local expenses.
- 7. Costs are estimated; visit <https://lkyspp.nus.edu.sg/graduate-admissions/fees-and-funding> for a breakdown of costs.

Scholarships

We offer a number of merit-based scholarships for the MPP, MPA and MIA programmes. Applicants must demonstrate good academic and professional records, leadership qualities and a strong desire to contribute to public service.



MASTER DEGREE PROGRAMMES AT-A-GLANCE

| Programme | Master in Public Policy (MPP) | Master in International Affairs (MIA) |
|--|--|---|
| Duration | Two years (full-time) | Two years (full-time) |
| Language of instruction | English | English |
| Approx. cohort size | 60-80 students | 30 students |
| Admissions criteria | <ul style="list-style-type: none"> 2 to 5 years of work experience is preferred Demonstrate maturity and commitment towards public service Proficiency in written and spoken English | <ul style="list-style-type: none"> All applicants will be considered holistically, but we strongly value applicants with relevant professional experience Passionate about contributing to positive transformation in Asia and beyond Proficiency in written and spoken English Relevant work experience is an advantage |
| Curriculum focus | Rigorous training for a strong foundation in economics, political science, policy analysis, to enable production of research and analysis of findings for effective programme evaluation and management. | Highlights Asia's role as a key influencer in world affairs. Programme provides students with a strong foundation in both theoretical frameworks and practical knowledge of multi-disciplinary subfields of international relations, with an immersive experience in Asia. |
| Core courses | <ul style="list-style-type: none"> Politics and Public Policy Economic Foundations for Public Policy Methods and Tools for Policy Analysis 1 Methods and Tools for Policy Analysis 2 Foundations of Public Policy Introduction to Public Management Policy Analysis Exercise (PAE) | <ul style="list-style-type: none"> International Relations: Theory and Practice Comparative Politics Research Methods in International Affairs International Relations of Asia Global Politics and the Economy MIA Master Thesis/ MIA White Paper/Capstone Project |
| Specialisations/Electives | <p>Students may specialise in:</p> <ul style="list-style-type: none"> Economics and Development Politics and International Affairs Management and Leadership <p>Students will be required to read two Restricted Elective from a basket of methods electives. Visit https://lkyspp.nus.edu.sg/graduate-programmes/master-in-public-policy-mpp/mpp-curriculum for more information.</p> | <p>Students will be able to specialise in six areas:</p> <ul style="list-style-type: none"> International Institutions and Global Governance International Security International Economics and Development Regional Studies: The Asia Pacific International Public Management and Leadership Environment and Sustainability <p>Students must read at least one restricted elective from a basket of courses on analytical tools and methodologies.</p> |
| International component and double degrees | <ul style="list-style-type: none"> Exchange programmes Double degrees with overseas partners Double degrees at National University of Singapore (NUS) | <ul style="list-style-type: none"> Exchange programmes Local and overseas internship opportunities Double Degree with overseas partner |
| Admissions documents | <ul style="list-style-type: none"> Online application form Degree scrolls and academic transcript (including grading description) Curriculum vitae or resume TOEFL iBT / TOEFL Home Edition / IELTS / IELTS Indicator Two essays GRE/GMAT test score (optional) Two reports of reference - Can be professional and/ or academic, 1 professional and 1 academic references, preferred. | <ul style="list-style-type: none"> Online application form Degree scrolls and academic transcript (including grading description) Curriculum vitae or resume TOEFL iBT / TOEFL Home Edition / IELTS / IELTS Indicator GRE/GMAT test score (optional) Personal statement in no more than 600 words One writing sample in no more than 2,000 words Two reports of reference (can either be professional or academic reference(s)) |
| Application deadlines | <p>Applications open on 1 August and close on 15 December every year.</p> <p>For more information, contact us at lkypostgrad@nus.edu.sg or visit our admissions webpage at https://lkyspp.nus.edu.</p> | |

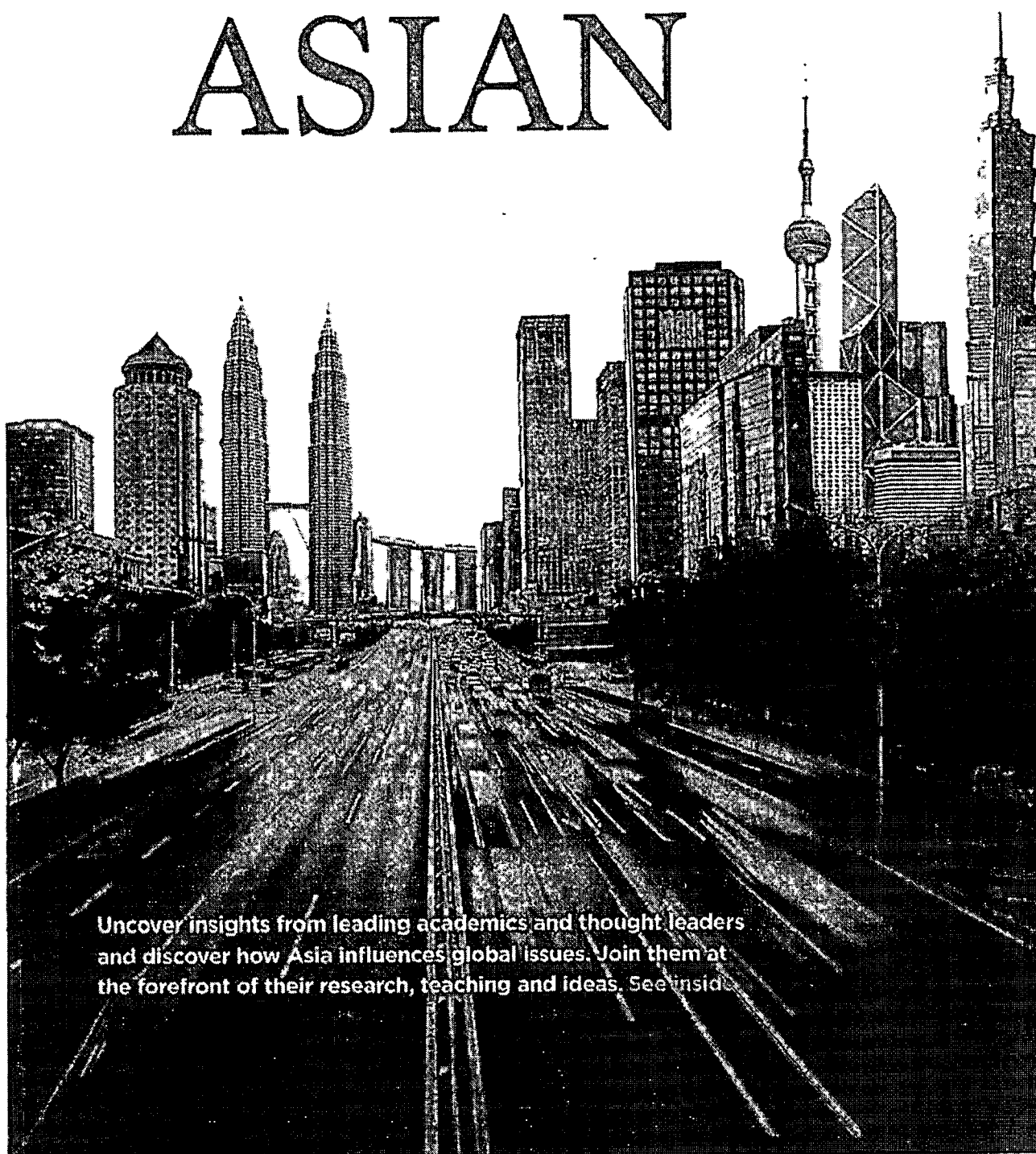


Lee Kuan Yew
School of Public Policy



469C Bukit Timah Road Oei Tiong Ham Building Singapore 259772 Email lkypostgrad@nus.edu.sg lkyspp.nus.edu.sg

UNRAVEL GLOBAL PERSPECTIVES IN A FUTURE THAT IS ASIAN



Uncover insights from leading academics and thought leaders and discover how Asia influences global issues. Join them at the forefront of their research, teaching and ideas. See inside.

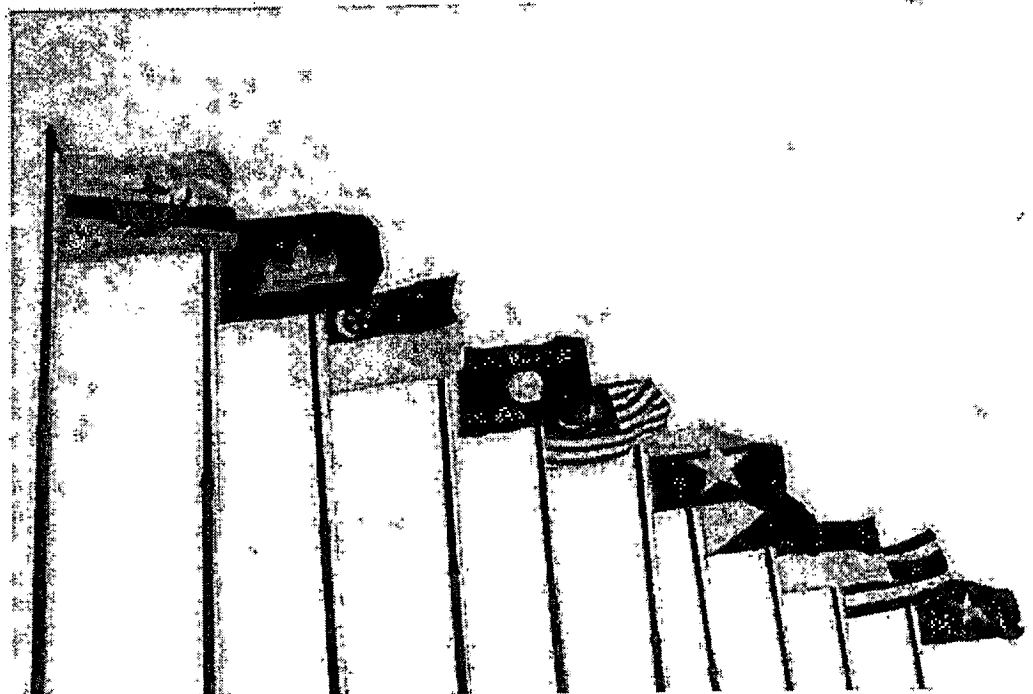
Take the lead in the **ASIAN** **CENTURY**

As societies and economies in Asia continue to grow apace, decisions and events in the region have the capacity to reverberate around the world.

The question is, how will leaders in business and government manage the inevitable transition to the new centre of power and influence?

The Master in International Affairs (MIA) Programme at the Lee Kuan Yew School of Public Policy (LKYSPP) seeks to provide students with the practical and theoretical knowledge to manage, and benefit from this global power shift.

Located in the heart of Southeast Asia, the school offers future leaders an unmatched vantage point from which to understand the dynamics of the region, and its growing influence on global affairs.





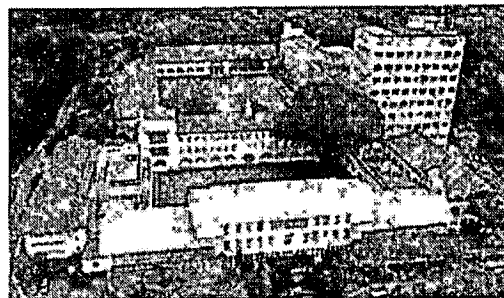
The Lee Kuan Yew School of Public Policy

Our school is ideally located in one of the best public policy laboratories in the world. The city-state is widely known for its strong governance and effective foreign and domestic policies.

Since 2004, we have welcomed and educated over 24,000 leaders and policymakers. Our dynamic, evolving curriculum has empowered them with the knowledge and skills to solve increasingly complex problems in a world pivoting towards Asia.

A DISTINGUISHED FACULTY TO INSPIRE AND CHALLENGE.

When you study with us you can expect to gain real world insights from our distinguished faculty of scholars and practitioners



who are trained in the world's best universities. Our dedicated faculty members bring extensive experience and intellectual candour. They help create a rigorous academic environment and provide unparalleled learning opportunities

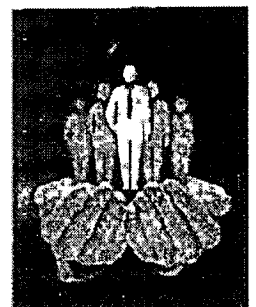
POWERFUL PROFESSIONAL, PERSONAL AND ACADEMIC NETWORKS.

You will join a global network of the world's most talented young leaders and form invaluable

professional and personal connections with an alumni network spanning over 100 economies

You will also benefit from the school's extensive global academic network, which includes strategic partnerships with the prestigious Global Public Policy Network (GPPN), which takes in Columbia University, the London School of Economics & Political Science (LSE) and L'institut d'études politiques de Paris (Sciences Po), among others

The school is also a member of the Association of Professional School of International Affairs (APSIA), which is dedicated to the improvement of professional education in international affairs and the advancement of international understanding, prosperity, peace and security



Empowered over 24,000 leaders and policymakers since 2004

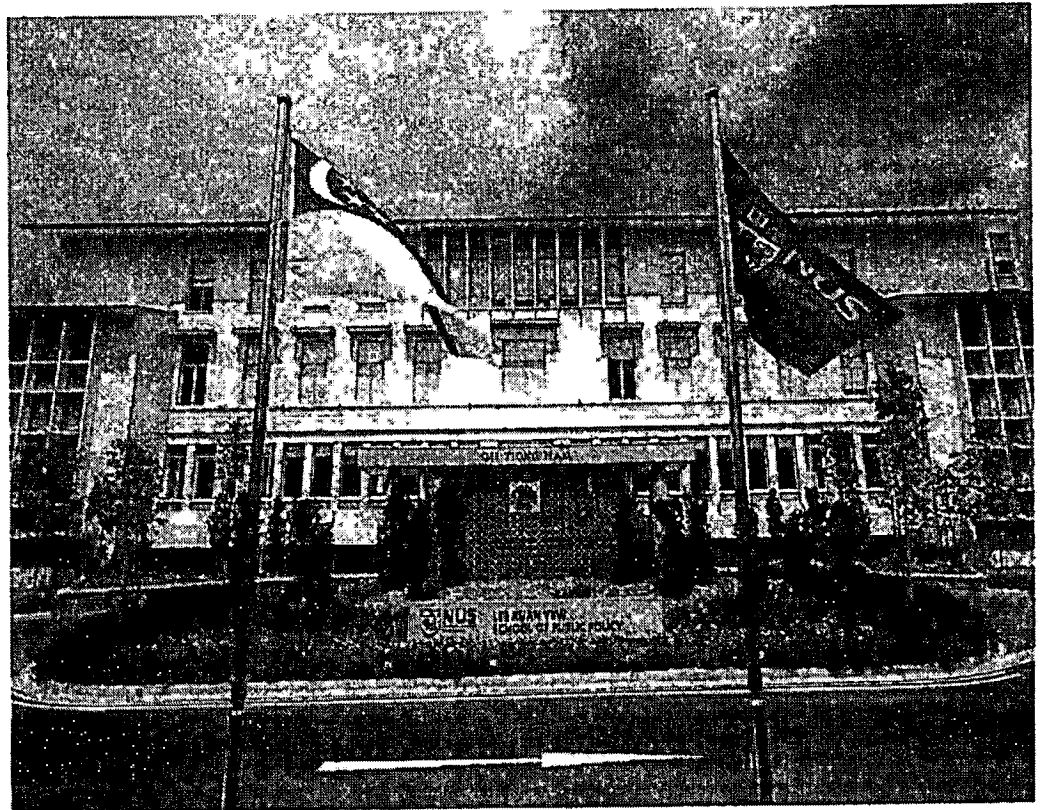
WHY STUDY INTERNATIONAL AFFAIRS?

The standard of living for millions of people in Asia continues to rise, as do the ambitions of individual countries in the region. This development is delivering economic growth, stability, and security, but it is also driving tension, conflict and uncertainty.

If the rising power, aspiration, and conflict in Asia is not managed well, the regional and international economic and security system will be shaken.

Better domestic governance in Asia is essential. However, it is increasingly difficult to imagine that, without paying serious attention to the relationships between states in Asia, and around the world, particularly the United States, Europe, and the Gulf and Middle East.

The need for knowledgeable, capable leaders with a firm grasp on international affairs in the region and beyond has never been greater.



For years now the world's economic centre has been pulling away from the West. While some might argue who will take America's place as the engine of the world economy, the facts are clear and undisputed. According to the Organisation for Economic Cooperation and Development, Asia is and will continue to be the world's fastest-growing region, with China and India leading the charge. By 2050, these two countries will become the world's largest economies. The world's economic centre will be in Asia.

A new world order is taking shape, definitely economically but potentially politically as well. However, as standards of living rise so too do expectations and risks. In an attempt to maintain or expand influence, major players are increasing their diplomatic and military activities. The need for well-trained leaders with a solid grounding in international affairs has never been greater. The time for Asia is now. Prepare yourself for that future by enrolling in the school today."

Professor Danny Quah

Dean and Li Ka Shing Professor in Economics,
Lee Kuan Yew School of Public Policy



Public Policy versus International Affairs

Asia's rapid rise has had an enormous effect on domestic public policy within individual states. The inevitable changes to public management and leadership, social policy, and public finance, have forced governments to change the way they make and implement policy.

As a result, public policy training that focuses on managing domestic affairs has, rightly, been given a high-priority

But the world is changing. Traditional domestic public policy concerns like social movements,

democratisation, ethnic and religious extremism, electoral politics, and the role of the media are increasingly being influenced externally by larger regional changes.

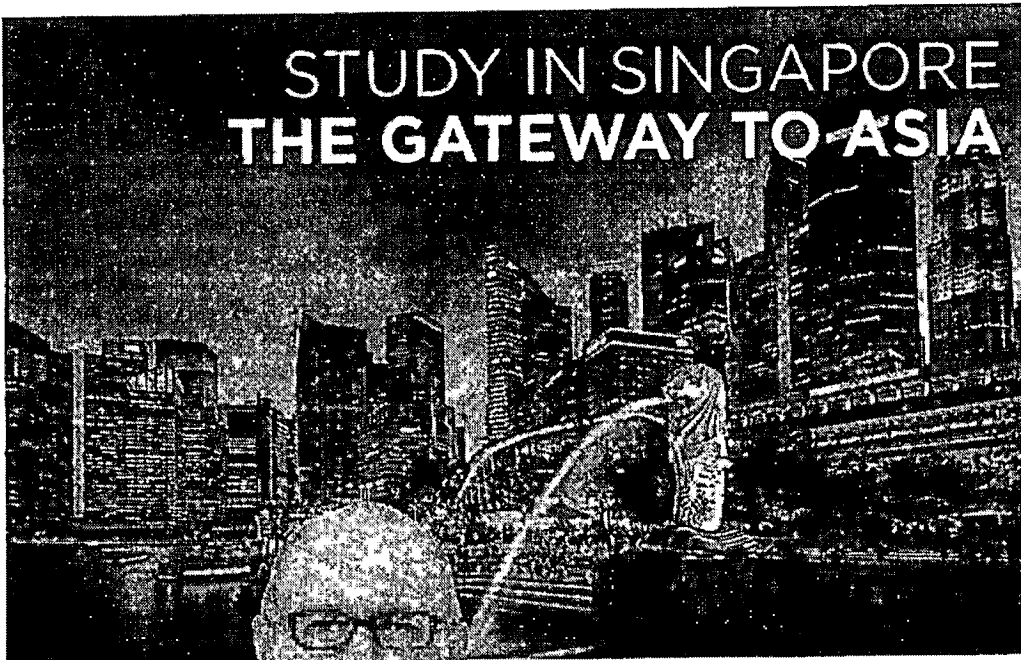
In order to understand and effectively manage these changes, a shift in educational emphasis is needed, from purely domestic affairs to the growing impact of regional and global issues. A sound grounding in international affairs is essential.

An MIA at the LKYSPP offers just that, via a comprehensive multidisciplinary curriculum.

The two-year, full-time programme provides a wide range of elective modules (including relevant domains in public policy studies) with ample scope to specialise in areas of interest.

Students enjoy connecting with other students from Singapore, Asia, and the rest of the world through an intense and uniquely immersive experience of fast-developing Asia in its many dimensions and nuances.

STUDY IN SINGAPORE THE GATEWAY TO ASIA



Against the backdrop of a rising Asia, being in Singapore gives students at the LKYSPP the perfect vantage point from which to watch the action unfold. A gleaming metropolitan city-state, Singapore is a diverse melting pot of Eastern and Western cultures. This is a globally renowned economic hub where over 7,000 multinational corporations (MNCs) are headquartered.

At the LKYSPP, you will gain access to internships in the public, private and non-profit sectors during school breaks, facilitated by the school's extensive networks across leading think-tanks, consulting firms, and other organisations. Singapore's central location in the heart of Southeast Asia also makes it an ideal base for students to explore and learn about this rapidly-developing region.

All of which makes it an ideal place to study international affairs and take the next step to a successful and influential career.

At the Lee Kuan Yew School of Public Policy, students explore answers to global problems from multiple perspectives, learning not only from the Western, but also from the Asian experience. Students can actually live the growing role of the region on the global stage during their studies.

Professor Francesco Mancini

Vice Dean (Executive Education) and
Associate Professor in Practice

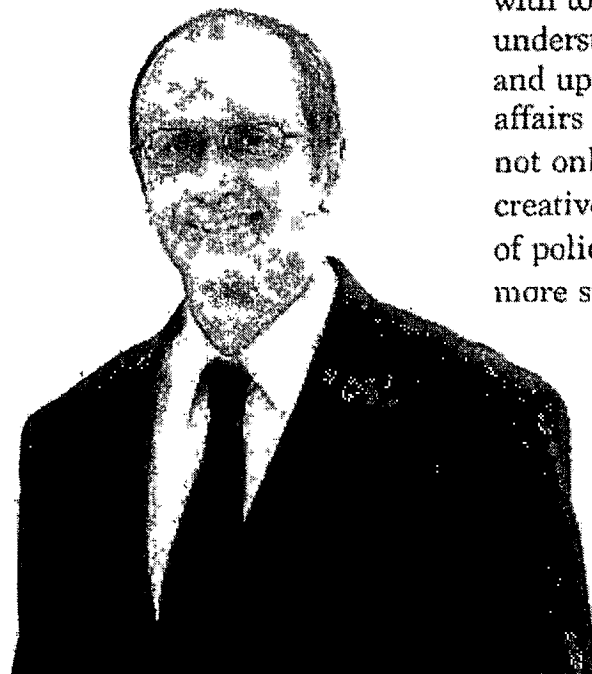


Course outline and summary of courses

MASTER IN INTERNATIONAL AFFAIRS

What can you expect to gain from the MIA programme?

- A working knowledge and deep understanding of issues, theories and debates in international affairs that can help you achieve an exciting career in diplomacy, public and foreign service, business, security, conflict resolution and development.
- A critical awareness of the strengths and limitations of each international affairs subfield, and how to make sense of its complexities.
- How to apply key theories and analytical tools to devise solutions for complex problems.
- Cross-cultural and decision-making skills to make practical judgements that are balanced by theoretical, analytical and ethical considerations.
- The confidence to provoke and effect positive transformations in the world, solving problems in ways that are constructive, imaginative, analytically sound, practically feasible and culturally sensible.
- A deep, nuanced understanding of Asia and its place in the world.



The (MIA) programme is intended to equip students with tools of analysis to understand the continuities and upheavals in international affairs and to get them to think not only rigorously but also creatively about the complexities of policy making for a safer and more sustainable world.

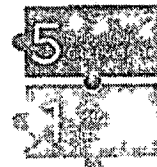
Professor Kanti Bajpai

Vice Dean (Research and Development)
and Wilmar Professor of Asian Studies

Programme Outline

As an MIA student, you will be required to read 64 units and achieve a minimum Grade Point Average (GPA) of 3.0 to graduate.

You need to complete the following:



3 Electives



*You may graduate without a specialisation.

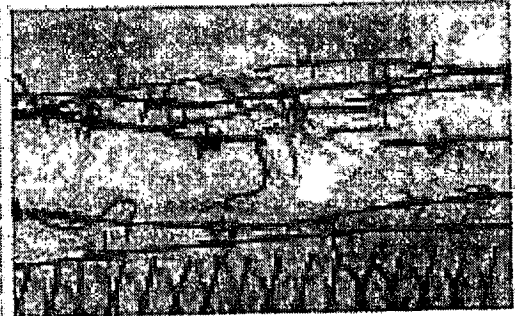
CORE COURSES

PP5901

International Relations: Theory and Practice



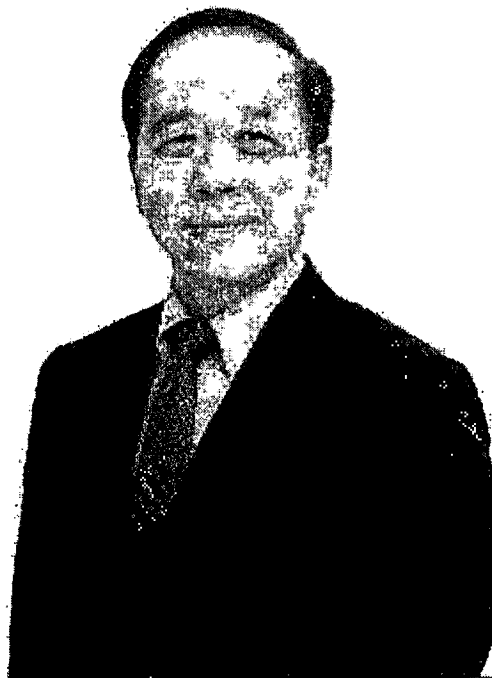
This course will introduce students to the predominant ways in which scholars of world politics go about making sense of the contemporary world. Three main approaches will be emphasised: realism, liberalism, and constructivism. In particular we will explore theories of the balance of power, the balance of threat, the rise and decline of great powers, hegemony, cooperation theory, the role of international institutions in global governance, and the structures and relations of identity between and among states and societies. Major contemporary issues that will be addressed include the relations among China, Europe, and the United States; the global political economy, including trade and development; and the prospects for global cooperation on issues such as climate change.



PP5913

Comparative Politics

This course introduces students to the foundations of comparative politics, which is the study of the domestic politics that happens within states. From taking this course, students will be able to answer questions such as: what is a state? How do different countries govern? What is the relationship between political institutions, economic development, and governance? How do political institutions change or persist? Why do some states experience conflict and contention among their people? Overall, the course will empower students with theories and frameworks to analyse how different countries around the world work.



Singapore is a terrific place to take the pulse of Asia for those who are interested in interpreting the continent. If you are really interested in Asia, you need to be here in order to analyse it.

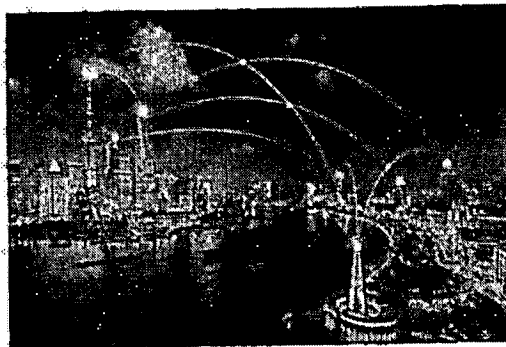
Professor Khong Yuen Foong

Li Ka Shing Professor in Political Science
and Co-Director, Centre on Asia and
Globalisation

Why is Asia the way it is today? What are the forces that shaped it? What are the new drivers that are not rooted in history? What new trends and developments in Asia should analysts look out for? This class provides a historical and contemporary perspective of Asia's position in the world. It engages in debates surrounding Asia from the onset of the Cold War to the present. It discusses how the regional order in Asia came about, and aims to understand how that order is evolving as new dynamics emerge and power shifts occur.

PP5915

International Relations of Asia



PP5914

Global Politics and the Economy

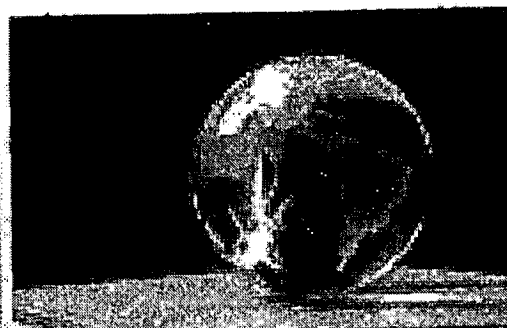
This course provides an introduction to contemporary issues in the global political economy. It examines a wide range of topics including trade, foreign investment, finance, and economic development from micro, macro, and institutional perspectives. These topics will also be interrogated in the context of developed and developing countries and in international relations as well as domestic or comparative politics.



Students in the MIA programme will learn so much not just from the LKYSPP faculty, but from each other as well. The relationships they form within this community will serve them for the rest of their career.

Professor Jonathan Art Chu

Assistant Professor
(Presidential Young Professor)
MIA Programme Chair



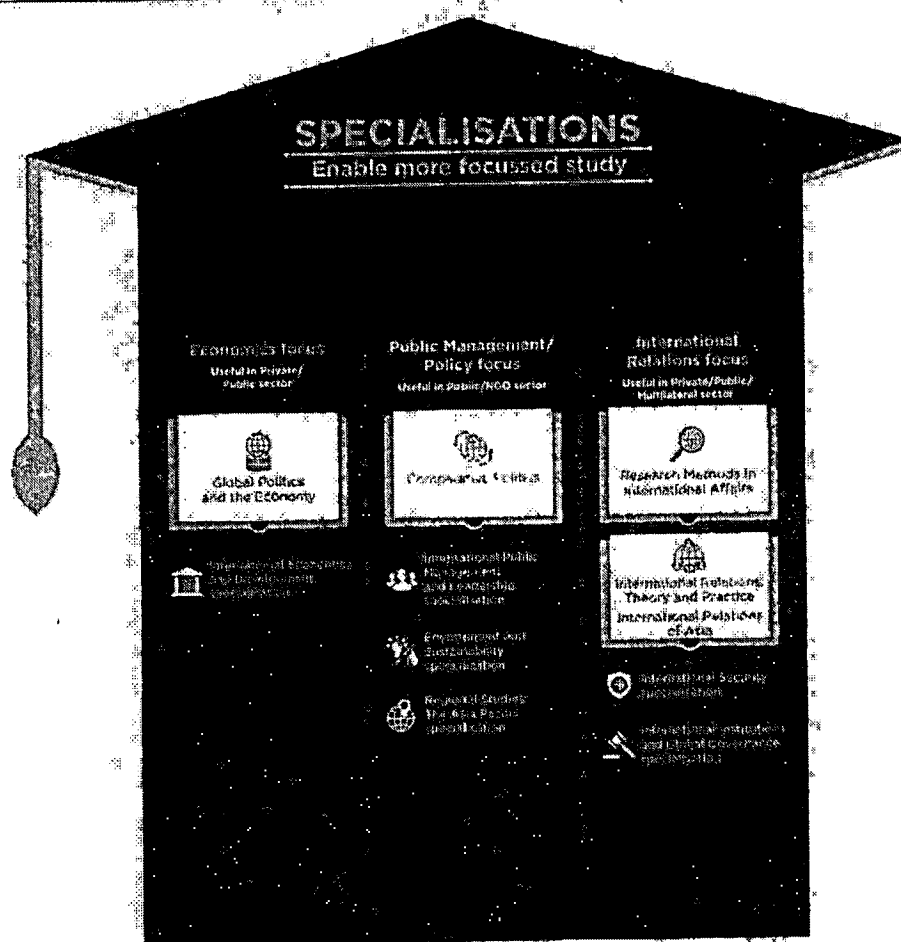
PP5904

Research Methods in International Affairs

To successfully identify and address the critical questions in international affairs, we need tools to advance our own analysis and to critically assess what others propose. This course provides an introduction to the principal research methods in international affairs. You will assess the strengths and weaknesses of alternative approaches, learn how and when

to use different lines of attack, and gain experience in critically evaluating published research. By the end of the module, you will have developed a personal toolkit that includes small-N case studies, comparative case studies, process tracing, hypothesis testing, analysis of variance, basic statistical methods (including regression analysis), and discourse analysis.





Double Degree and Exchange Programme:

Qualified students can pursue a Master of Arts in International Economics and Finance double degree with our partner institution, Paul H. Nitze School of Advanced International Studies (SAIS), a graduate school of Johns Hopkins University.

The Master in International Affairs programme provides students with a strong foundation in both theoretical frameworks and policy knowledge in various subfields of international relations, together with an immersive experience in Asia, while the Masters of Arts in International Economics and Finance programme prepares students to understand advanced economic theories, master quantitative and econometric skills, and analyze a wide range of international economics and financial issues.

Admission is highly competitive and accepted students get to spend one year at the LKY School and the second at SAIS. Application to SAIS should be made at the end of the first semester at LKY School. Upon successful completion of the programme, graduates will be awarded with two Master degrees from LKY School and SAIS.

Eligible MIA students can participate in a 1-semester exchange programme with our partner institutions, which include:

NORTH AMERICA

John Hopkins School of Advanced International Studies (SAIS), USA

EUROPE

Hertie School of Governance, Germany
Bocconi University, Italy

University of St Gallen, Switzerland

The Graduate Institute of International and Development Studies, Geneva, Switzerland (IHEID)

ASIA AND THE PACIFIC

The University of Tokyo, Graduate School of Public Policy (GraSPP), Japan

Tsinghua University, China

Fudan University, China

Seoul National University, Graduate School of International Studies, South Korea

Korea University, South Korea

Yonsei University, South Korea

Nazarbayev University, Kazakhstan

* Subject to the availability of courses in each semester.

Ambassador's Circle - exclusively for MIA

The Ambassador's Circle is an exclusive Master in International Affairs event series, where each semester our students will sit-down for an informal, off-record discussion with a senior local diplomat, discussing current geopolitical concerns and the changing realities of modern diplomacy.

Past Speakers

• Dr Arken Arystanov,
Former Ambassador Extraordinary and
Plenipotentiary of the Republic of Kazakhstan
to the Republic of Singapore, New Zealand and
the Commonwealth of Australia

• H.E. Ashok Kumar Mirpuri,
Former Ambassador of the Republic of
Singapore to the United States of America

• Ms Barbara Plinkert,
Former European Union Ambassador to
Singapore

• Mr Bruce Gosper,
Former Australian High Commissioner to
Singapore

• H.E. Chol Hoon,
Ambassador of the Republic of Korea to
Singapore

• Mr Flavio Soares Damico,
Former Ambassador of Brazil to Singapore

• Mr Jawed Ashraf,
Former Indian High Commissioner to
Singapore

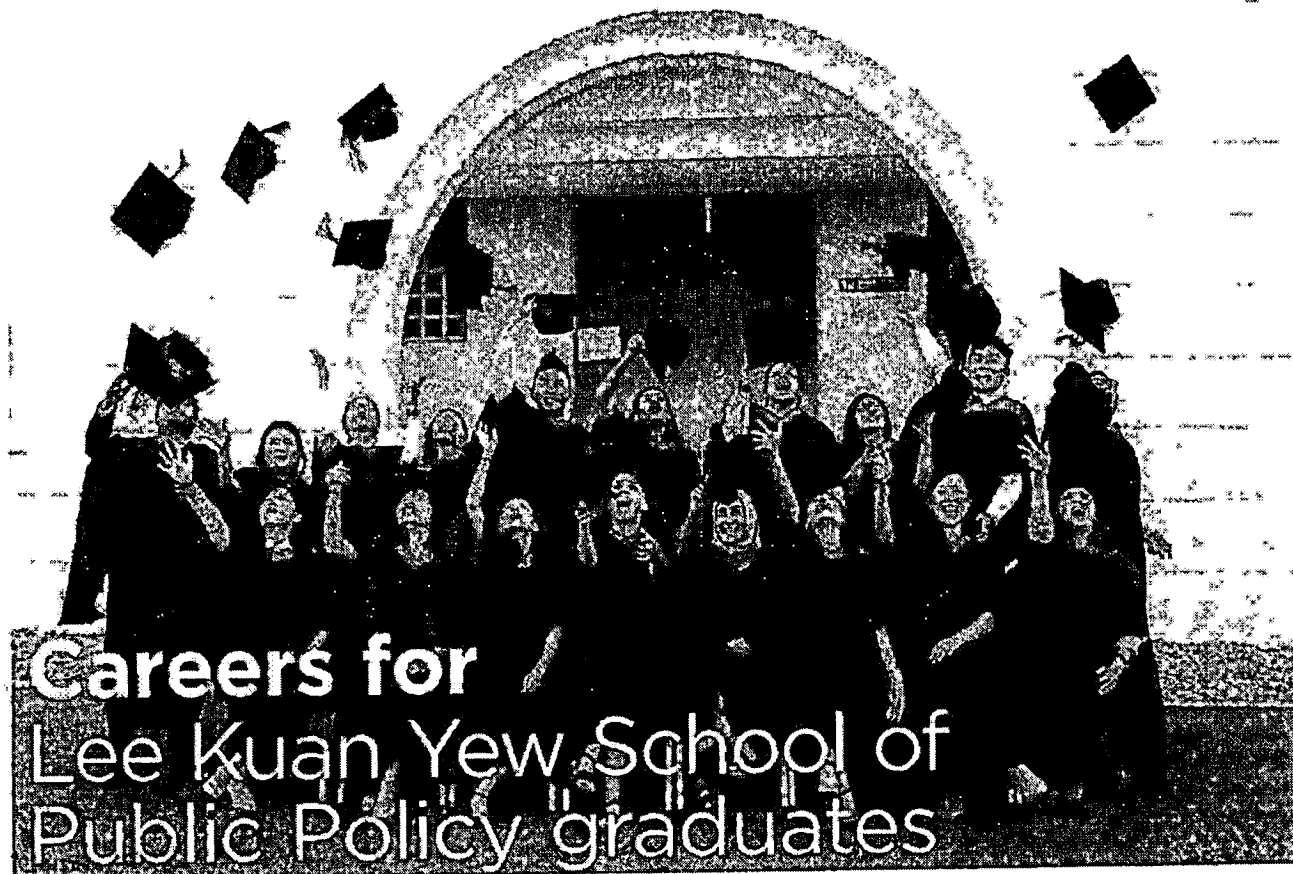
• Mr Niclas Kvarnström
Former Sweden Ambassador

• H.E. Ngurah Swajaya,
Former Ambassador of Indonesia to Singapore

• H.E. Dr. Norbert Riedel,
German Ambassador to Singapore

• Mr Rafik Mansour,
Former Chargé d'Affaires a.i. U.S. Embassy
Singapore

• H.E. Sarah McGrath,
Ambassador of Ireland to Singapore



Careers for Lee Kuan Yew School of Public Policy graduates

LKYSP graduates are highly sought after. Our alumni can be found working in governments, multilateral institutions, corporations and non-governmental organisations across the world.

Our extensive network of alumni contribute to public good in a wide variety of fields such as economic development, social policy, finance, international

relations, public affairs and consulting, fulfilling the school's mission of improving and transforming the lives of the people they serve.

Equipped with international perspectives and a nuanced understanding of Asia, our graduates go on to be leaders in their respective fields.

TAKE THE FIRST STEP WITH THE CAREER SERVICES UNIT

The Career Services Unit in the LKYSPP connects our students with employers to help them gain valuable experience in the workplace, provide them with opportunities to apply their academic experience and give them a competitive edge in their job search.

Some of the prominent organisations, where our students have interned.

Abbott Laboratories

ASEAN Advisory Pte Ltd

Asia Europe Foundation

Centre for Humanitarian Dialogue (HD Centre)

European Union
Delegation to Singapore

Global Environment
Institute

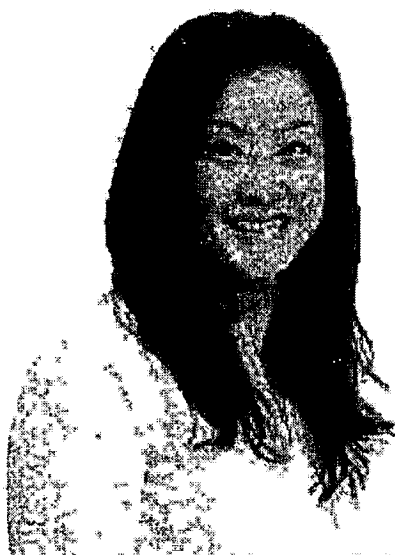
GovInsider

Hengqin Institute of
Innovation
and Development

International Centre for
Integrated Mountain
Development (ICIMOD)

United Nations
and United Nations
Development Programme
(UNDP)

World Bank



From the Wang-Koo talks between China and Taiwan to the more recent Trump-Kim summit, Singapore has stood at the centre of historic meetings between longtime adversaries seeking peace. Why do global leaders choose Singapore as the ideal location for reconciliatory talks? Join the (MIA) programme today and understand the dynamics behind global decisions such as these.

Professor Selina Ho

Assistant Professor and Co-Director,
Centre on Asia and Globalisation

Admissions Criteria

We seek applicants who are passionate about understanding the transformation that is taking place in Asia and across the world. They need to be highly motivated, outward-looking, and open to new ideas.

Applicants seeking admission to the programme should possess a good Bachelors degree (Honours second class and above) or its equivalent. Applicants should have ideally a minimum of two years of work experience. Proficiency in written and spoken English is critical.

Applications to the Master in International Affairs will be accepted from 1 August till 15 December, every year.

REQUIRED DOCUMENTS:

Online application form

Degree scrolls and academic transcripts (including grading description)

Curriculum Vitae or Resume

TOEFL iBT / TOEFL iBT Home Edition / IELTS / IELTS Indicator

Personal statement of no more than 600 words describing how your personal, academic, and/or professional background inform your motivation for applying to the MIA programme, how you hope to contribute to your classmates and programme's success, and how you hope to use your time at LKYSPP to further your career or academic goals.

1 writing sample (no more than 2,000 words)

2 letters of reference (can either be a professional or academic reference(s))

Applicants with qualifications awarded in English-medium institutions in Australia, Canada, India, Ireland, New Zealand, Philippines, Singapore, the UK or the US are exempt from providing test scores.

For qualifications obtained in countries not mentioned, if your Bachelor or Master degree was conducted entirely in English, TOEFL or IELTS test scores may be waived if you provide a letter from your institution.

Typical MIA Academic Calendar

| Year 1 | Semester 1 (August-December) | Semester 2 (January - May) |
|--------|---|---|
| | PP5901 International Relations: Theory and Practice PP5914 Global Politics and the Economy PP5904 Research Methods in International Affairs *Specialisation Elective 1 | PP5913 Comparative Politics PP5915 International Relations of Asia *Restricted Elective 1 *Specialisation Elective 2 |
| Year 2 | PP5910 MIA Thesis / PP5911 Capstone Project / PP5912 MIA White Paper *Specialisation Elective 3 *Specialisation Elective 4 *Specialisation Elective 5 **Exchange Semester Abroad | PP5910 MIA Thesis / PP5911 Capstone Project / PP5912 MIA White Paper Elective 6 Elective 7 Elective 8 |
| | <p>PP5910 MIA Thesis The MIA thesis is an independent piece of writing that represents the culmination of student's training in international affairs. It is an opportunity for a student to investigate a significant question in international affairs through research, reflection, analysis, and writing.</p> <p>OR</p> <p>PP5912 MIA White Paper The White Paper is a policy-focused report that addresses a current or emerging international issue facing an imagined/hypothetical client, which can be a government, international or transnational organisation, private sector entity, or civil society entity such as an NGO. The aim of the White Paper is to allow students to apply the knowledge and skills that they have learnt in the MIA to contemporary real-world problems; to define and analyse the policy problem; to assess, if relevant, past and continuing efforts to solve or manage the problem; and to formulate alternative policy options and develop specific, actionable recommendations backed by argumentation and evidence.</p> <p>OR</p> <p>PP5911 Capstone Project (based on a 2-months internship experience) The MIA Capstone Project is an internship-based project culminating in a paper/report on an international issue or challenge that the student worked on during the internship. The internship aims to allow students to apply the knowledge and skills that they have learnt to define and analyse international policy issues, evaluate existing policies, formulate and assess policy options and develop specific, actionable recommendations for their client organisation.</p> | |
| | <p>*Specialisation is not mandatory. If you choose not to specialise, you may choose any electives that are offered in the semester. MIA students may also take the electives from the Faculty of Law and Faculty of Arts and Social Sciences as their specialisation.</p> <p>**PP5910 MIA Thesis, PP5911 Capstone Project and PP5912 MIA White Paper is a year-long course.</p> <p>**Students can apply to go on an exchange semester with some of the exchange institutions.</p> | |

FEES AND FUNDING

The following tuition fees are applicable for Academic Year 2023/2024. Please note that fees are subject to change.

| MIA AY 2023/2024 Tuition Fees | Semester 1 | Semester 2 | Semester 3 | Semester 4 | Total |
|---|------------|------------|------------|------------|-------------|
| Singapore Citizens, Singapore Permanent Residents and International Students alike* | \$523,616 | \$523,834 | \$523,834 | \$523,834 | \$2,095,118 |

*Tuition fees subject to prevailing GST (8% in 2023 and 9% from 2024)

Please refer to the programme's website for more information on other fees and financing options:
<https://lkyspp.nus.edu.sg/graduate-admissions/fees-and-funding/#costofliving>

OTHER FEES

Please note the fees below are applicable if you are accepted into the MIA programme.

Student Service Fee (per semester): S\$167.80

Health Service Fee (per semester): S\$83.25

Fees shown above are inclusive of prevailing GST and are subject to change. Additional costs include payment for student development programmes, the orientation programme, student pass/visa fees, and the programme closure event. These costs vary from year to year, but are currently estimated to be S\$4,000 for the duration of the programme.

Please refer to our website for an estimation of monthly living costs in Singapore.

Applications open on 1 August and close on 15 December every year.

For more information, contact us at lkysppgrad@nus.edu.sg or visit <https://lkyspp.nus.edu.sg/graduate-programmes/master-in-international-affairs-mia/overview>

To visit our Admissions website, please scan the QR code below:

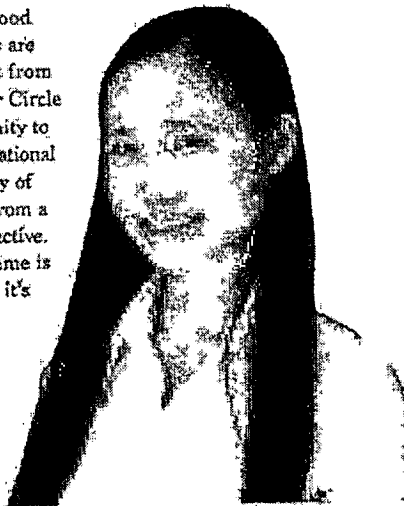


FOCUS

I chose to study the MIA at LKYSPP because of the Asia-focussed curriculum.

I chose to study the MIA at LKYSPP because of the Asia-focussed curriculum. I aspire to build on my knowledge of traditional Chinese culture in order to find a particularly Asian path to good governance and policy. The professors are highly regarded and I learned a lot from them. Events such as the Ambassador Circle Series provided me with the opportunity to learn more about the realities of international affairs. Last but not least, the diversity of our MIA class has helped me think from a multifaceted and multicultural perspective. My main takeaway from this programme is that knowledge reshapes destiny, and it's never too late to achieve your goals.

Zheng Weitong
China, MIA class of 2019



I have worked together with people from different countries and diverse backgrounds to create a truly global perspective on international affairs.



The Lee Kuan Yew School of Public Policy was at the top of my list when I was choosing to pursue my masters. During my 2 years at LKYSPP, I have worked together with people from different countries and diverse backgrounds to create a truly global perspective on international affairs. I have done an internship in China, an exchange programme in Kazakhstan, and Singapore is now my 'second home'.

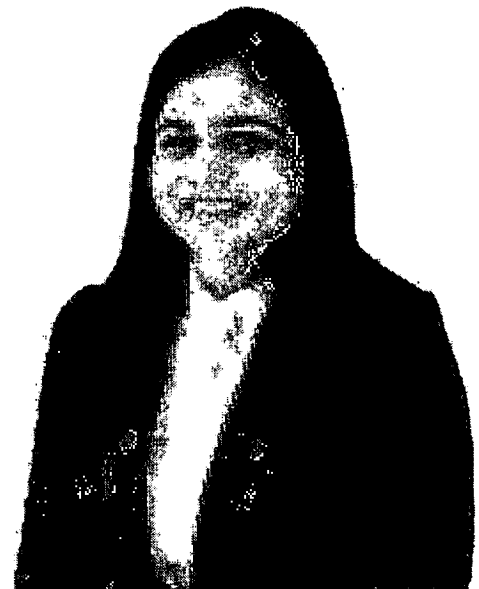
Francesco Brusaporco
Italy, MIA class of 2020

I firmly believe that only when there is clarity of thought on Asian geopolitics can one contribute productively to shaping it.

The MIA programme offered me the chance to study international affairs from a public policy perspective. My experience at the school has reaffirmed my belief that these are complementary attributes essential for unpacking the increasingly complex geopolitics of the world. Another important factor for me choosing this programme was the Asia-focussed nature of its curriculum. I firmly believe that only when there is clarity of thought on Asian geopolitics can one contribute productively to shaping it.

I now have the research and analysis skills I need to effectively interpret the evolving world economic and development landscape. The MIA programme strikes the perfect balance between practical application and theoretical understanding to deliver a well-rounded course perfectly suited to anyone looking to make a difference in the world.

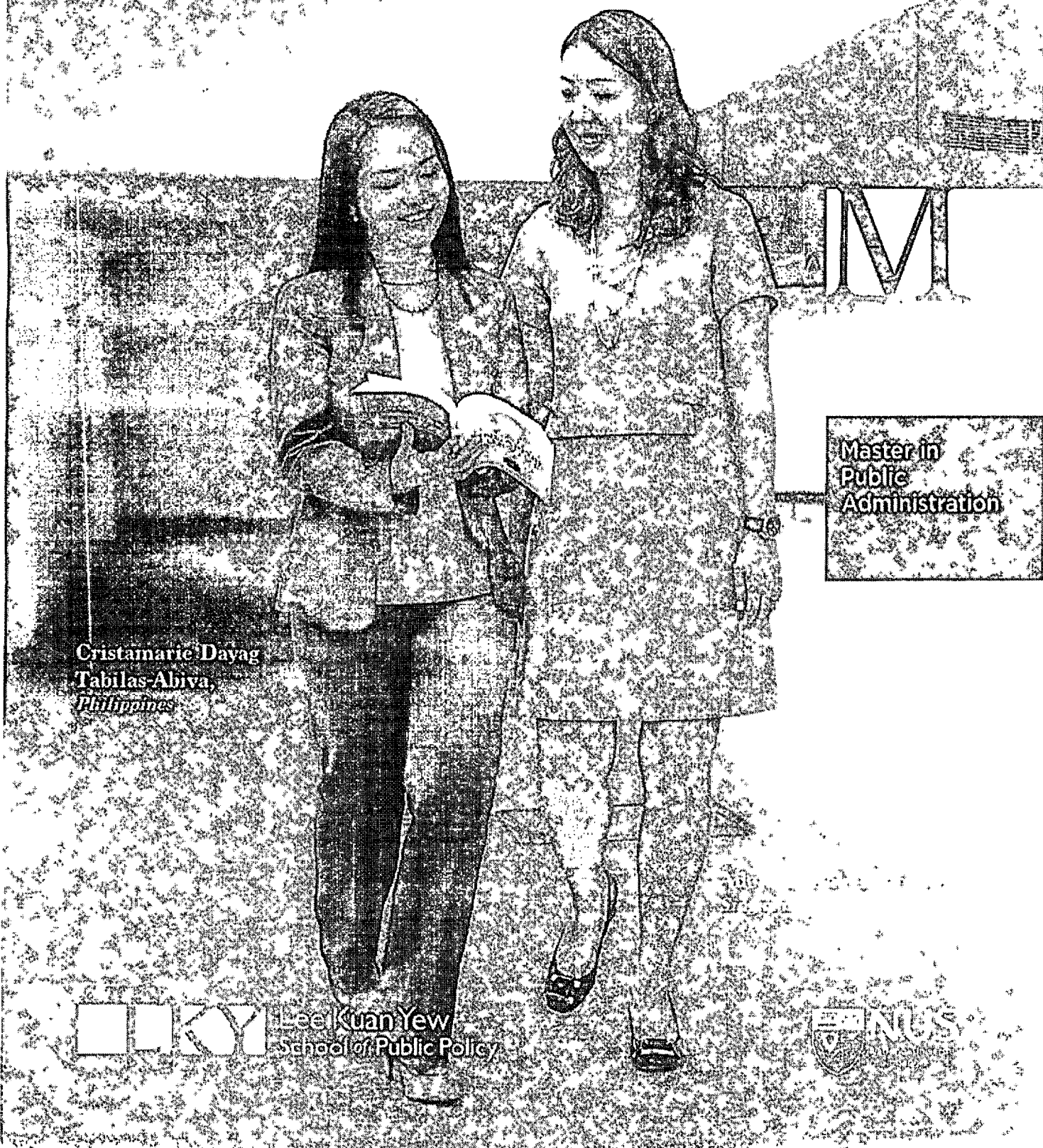
Akanksha Sinha
India, MIA class of 2019



When the effective leader
is finished with his
work, the people say it
happened naturally.

Lao Tzu

DEVELOPING LEADERSHIP
IN ASIA, PAP
IN THE TRADITION



Master in
Public
Administration

Cristamarie Dayag
Tabilas Abiva
Philippines



Lee Kuan Yew
School of Public Policy



MASTER IN PUBLIC ADMINISTRATION

Be equipped to handle complex issues that impact national, regional and global policies and projects.

Our 1-year full-time Master in Public Administration (MPA) is an interdisciplinary course of study aimed at mid-level professionals who aspire to take on senior management roles or make a career change. A key feature is the Governance Study Project, which gives students the opportunity to study and research in a neighbouring country.



Admissions Criteria

Applicants should have minimum 5 years of working experience and attained mid-level managerial position in their careers. They should aspire to management roles and demonstrate commitment towards public service. Proficiency in written and spoken English is a must.

Required Documents

- Online application form
- Degree scrolls and academic transcript (including grading description)
- Curriculum vitae or resume
- TOEFL iBT/ TOEFL iBT Home Edition/ IELTS/ IELTS Indicator
- GRE/GMAT test score (optional)
- 2 essays
- 2 letters of reference (professional)
- Organisation Chart. Illustrate and clearly point out current position within the organisation, including two levels above and two levels below the applicant's current position.

Applicants with qualifications attained in English-medium institutions in Australia, Canada, India, Ireland, New Zealand, Philippines, Singapore, the UK or the US are exempted from providing test scores. For qualifications attained in countries not mentioned, if your Bachelor or Master degree was conducted entirely in English, TOEFL or IELTS test scores may be waived if you provide a letter from your institution.

Curriculum

The MPA curriculum comprises core courses and a wide range of elective. Students are required to complete:

- 4 core courses
- 2 elective courses from the Management and Leadership specialisation area
- 4 elective courses

Governance Study Project

A key feature of the MPA Programme is the Governance Study Project (GSP), which aims to expose students to a complex public policy issue of relevance to Asia, and share insights on how local policymakers are addressing this issue through a multi-agency, multi-pronged effort. Learning journeys relevant to the GSP themes are also organised.

In this module, students work together in groups to prepare a policy memo and report under faculty supervision. This applied learning component provides an opportunity for students to reflect on the knowledge and insights gained from the course. They will then share their research findings at a conference at the end of the Semester 2.



Classroom Diversity

The MPA cohort comprises 40 to 60 students from public, private and not-for-profit sectors, from more than 20 countries.

Core Courses

Core courses focus on imparting practical skills, disciplinary knowledge and interdisciplinary competencies that facilitate the work of policy practitioners, researchers, public managers and leaders. They include:

- Economic Analysis
- Policy Analysis
- Public Management
- Governance Study Project

Elective Courses

Those who seek a broader Public Administration education must choose to read any four electives from over 60 courses. Students can choose from a new elective basket 'Evidence-Based Innovation Lab', which includes courses such as:

- Big Data, Official Statistics, and Public Policy
- Data Analytics: Science, Art and Applications

Students are also required to complete 2 elective courses from the Public Management and Leadership specialisation area.

Please visit <https://lkyspp.nus.edu.sg/graduate-programmes/electives> for the full list of electives.

Cross-Faculty Courses

Students may also register for up to 2 elective courses offered in other postgraduate programmes, such as Business Administration, Economics, Political Science and Southeast Asian Studies.

Double Degree

Qualified students can pursue double degrees with the NUS Business School and the NUS Faculty of Law. They include:

- Master in Public Administration and Master of Business Administration (MPA-MBA)
- Master in Public Administration and Master of Laws (MPA-LLM)

Academic Calendar

| Pre-Semester | Semester 1 | Semester 2 |
|--|---|---|
| Mid-July to August Orientation Programme | August to November 2 Core Courses 3 Elective Courses* | January to April 2 Core Courses 2 Elective Courses* |
| | End-November to Early-December Examination | End-April to Early-May Examination |
| | December Vacation | |
| Special Term | | |
| | Early-May to Mid-June 1 Elective Course* | |
| | End-June Examination | |

* Students have an option to complete their MPA in Semester 2 instead of Special term if they can complete all 6 electives by Semester 2. MPA students must complete 2 electives courses from the Management and Leadership specialisation area in any of the semesters.

Application Period

Applications open on 1 August and close on 31 December every year.



Lee Kuan Yew
School of Public Policy



469C Bukit Timah Road, Del Tiong Ham Building, Singapore 259772
Email: kyppstgrad@nus.edu.sg
Website: kypp.nus.edu.sg

So
ge

the
the

up
eat

the

Nelson Mandela



Mariyam Raza Hinder
India

IVE
IDE

Master in
Public Policy



Lee Kuan Yew
School of Public Policy



MASTER IN PUBLIC POLICY

Look forward to
studying economics,
political science and
public management.

Our 2-year full-time Master in Public Policy (MPP) provides a strong foundation in policy analysis, programme evaluation and management. Students will be equipped with the necessary skills and competencies to become highly skilled policymakers and analysts in the public, private or non-profit sectors.

Admissions Criteria

MPP applicants must demonstrate intellectual distinction, personal character and leadership capabilities. They should possess at least a bachelor degree and 2 to 5 years of working experience is preferred. Proficiency in written and spoken English is essential.

Required Documents

- Online application form
- Official academic transcripts and certificates (including grading description)
- Curriculum vitae or resume
- TOEFL iBT/ TOEFL iBT Home Edition/ IELTS/ IELTS Indicator
- 2 essays
- 2 reports of reference — 1 professional and 1 academic

Applicants with qualifications attained in English-medium institutions in Australia, Canada, India, Ireland, New Zealand, Philippines, Singapore, the UK or the US are exempted from providing test scores.

For qualifications attained in countries not mentioned, if your Bachelor or Master degree was conducted entirely in English, TOEFL or IELTS test scores may be waived if you provide a letter from your institution.

Curriculum

The MPP curriculum comprises core courses, restricted electives, and a wide range of specialisation courses and electives.

Core Courses

The core courses focus on imparting practical skills, disciplinary knowledge, and interdisciplinary competencies necessary for the work done by policy practitioners, researchers, public managers and leaders.

- Economics Foundations for Public Policy
- Politics and Public Policy
- Introduction to Public Management
- Methods and Tools for Policy Analysis 1
- Foundations of Public Policy
- Methods and Tools for Policy Analysis 2
- Policy Analysis Exercise (PAE)*

*Policy Analysis Exercise (PAE) is a public policy project completed as a capstone course for a client organisation in the public, private or non-profit sector

Restricted Elective Courses

Students must read 2 restricted electives, one each from the following baskets:

- Basket 1: Programming for Data Analytics for Public Policy
 - Introduction to Coding for Public Policy using Python, or;
 - Introduction to Coding for Public Policy using R
- Basket 2: Public Finance and Public Financial Management
 - Financial Management for Public Organisations
 - Public Finance

Specialisation

Students can acquire greater depth and sophistication through any 1 of the 3 areas of specialisation:

- Economics and Development
- Politics and International Affairs
- Management and Leadership

Students may also opt to graduate without a specialisation.

Elective Courses

Those who seek a broader public policy education may choose a more generalist approach by selecting up to 5 electives from a broad range of courses. Students can choose from a new elective basket 'Evidence-Based Innovation Lab', which includes courses such as:

- Big Data, Official Statistics, and Public Policy
- Data Analytics: Science, Art and Applications
- Policy Innovation Lab
- Introduction to Social Surveys for Researchers and Decisionmakers

Visit <https://lkyspp.nus.edu.sg/graduate-programmes/master-in-public-policy-mpp/mppcurriculum> for more information.

Classroom Diversity

The MPP cohort comprises 60 to 80 students from public, private and non-profit sectors, from more than 20 economies.

Double Degree

Overseas

Qualified students will have the opportunity to pursue a dual degree abroad for a year at our partner institutions. Our partner institutions include:

- Columbia University, School of International and Public Affairs (SIPA), United States
- The London School of Economics and Political Science (LSE), United Kingdom
- University of Tokyo, Graduate School of Public Policy (GraSPP), Japan

Concurrent Degree Programmes

Outstanding undergraduates from the NUS Business School, NUS Faculty of Law and NUS Faculty of Arts and Social Sciences are welcome to apply for the MPP, as an extension of their study in NUS. Places for the concurrent degree programme are highly competitive and application must be made in the student's final year of study.

- Bachelor of Business Administration (Honours) / Business Administration Accountancy (Honours) & Master in Public Policy (MPP)
- Bachelor of Laws (Honours) & Master in Public Policy
- Bachelor of Social Sciences (Honours) (for Economics, Political Science, Sociology or Social Work majors) or a Bachelor of Arts (Honours) in PPE (Philosophy, Politics, and Economics) & Master in Public Policy

Singapore

Singapore students can also pursue a double degree at the NUS Business School and the NUS Faculty of Law.

- Master in Public Policy and Master of Business Administration (MPP-MBA)
- Master in Public Policy and Master of Laws (MPP-LLM)



Exchange Programme

Eligible MPP students can participate in a 1-semester exchange programme with our partner institutions which include:

Asia-Pacific

- Fudan University, School of International Relations and Public Affairs
- Korea University, Department of Public Administration
- Nazarbayev University Graduate School of Public Policy
- Peking University, School of International Studies
- Seoul National University, Graduate School of International Studies
- Tsinghua University, School of Public Policy and Management
- The University of Tokyo, Graduate School of Public Policy (GraSPP)
- Yonsei University, Graduate School

Americas

- Fundacao Getulio Vargas, Escola de Administracao de Empresas de Sao Paulo (EGV-EAESP)
- Georgetown University, The McCourt School of Public Policy
- John Hopkins University, School of Advanced International Studies (SAIS)
- Paul H. Nitze School of Advanced International Studies
- University of British Columbia
- University of Toronto

Europe

- Hertie School of Governance
- Sciences Po, School of Public Affairs
- The Graduate Institute of International and Development Studies
- Universita Commerciale Luigi Bocconi
- University of St. Gallen

Policy Analysis Exercise

The LKYSPP Policy Analysis Exercise (PAE) is designed to engage second-year Master in Public Policy (MPP) students in a supervised project with clients from the public, private or people sectors. The PAE presents an opportunity for students to apply the knowledge and tools acquired through the MPP programme to real-world policy issues, while also adding value to the client organisations by generating fresh perspectives and actionable insights. Students work in small groups with a Faculty Advisor (FA) and a client to identify a policy problem, prepare a project work plan, conduct research (including fieldwork, where relevant), and prepare a final project report that is both relevant to the client and consistent with LKYSPP's high academic standards. The PAE culminates with a conference where the student groups present their findings and recommendations to the client.

Internships

Students are encouraged to pursue internships in the public, private or non-profit sector. We actively engage leading think-tanks, consulting firms, multilateral institutions and non-profit organisations to facilitate internships. Internship opportunities are posted regularly throughout the year on the LKYSPP Career Portal, and students may work part-time up to 16 hours a week during a semester, or full-time during the official National University of Singapore (NUS) vacation periods.

Academic Calendar

| Year 1, Semester 1 | Year 1, Semester 2 |
|---|--|
| <ul style="list-style-type: none">- Introduction to Public Management- Methods and Tools for Policy Analysis 1- Foundations of Public Policy- Free Elective | <ul style="list-style-type: none">- Politics and Public Policy- Methods and Tools for Policy Analysis 2- Economic Foundations for Public Policy- Restricted Elective or Free Elective |
| Year 2, Semester 1 | Year 2, Semester 2 |
| <ul style="list-style-type: none">- *Specialisation Elective 1- *Specialisation Elective 2- *Specialisation Elective 3- Restricted Elective or Free Elective | <ul style="list-style-type: none">- Policy Analysis Exercise- *Specialisation Elective 4- *Specialisation Elective 5- Restricted Elective or Free Elective |

* Specialisation is not mandatory. If a student chooses not to specialise, the specialisation elective would be replaced by an elective.

Application Period

Applications open on 1 August and close on 15 December every year.



Lee Kuan Yew
School of Public Policy



469C Bukit Timah Road, Qinet Tiong Ham Building, Singapore 259772
Email: lkysppgrad@nus.edu.sg
Website: lkyspp.nus.edu.sg

เรียน นางสาวธัญลักษณ์ ชุ่มพระวงศ์

มอบ ทศ

(นางสาวทิตยา ทองบุญ)
ผู้อำนวยการกองการต่างประเทศ
๙ พฤศจิกายน ๒๕๖๖